

Sunderland Safeguarding Board make sure that people in Sunderland can live safely and free from abuse.



This is the yearly report for Sunderland Safeguarding Adults for 2020 – 2021.



The Safeguarding Board is made up of



Sunderland City Council



Northumbria Police



Sunderland Clinical Commissioning Group



South Tyneside and Sunderland NHS Foundation Trust



Cumbria Northumberland Tyne and Wear NHS Trust



Healthwatch Sunderland



The Safeguarding Board collect information to help support people at risk of abuse.



We use the information we receive to make services better.



We keep everyone up to date with what is happening.



We work together to keep people safe from all kinds of abuse.



Types of abuse



Physical Abuse

This is when someone hurts or injures a person on purpose. This can result in cuts and bruises, burns or broken bones.



Sexual Abuse

This can be someone touching another person in private parts of their body against their will, forcing a person into sexual acts or to watch pornography.



Financial Abuse

This is when someone takes another person's money or belongings for their own gain. This can be borrowing money and not paying it back, stealing or taking a person's benefits.



Mental Abuse

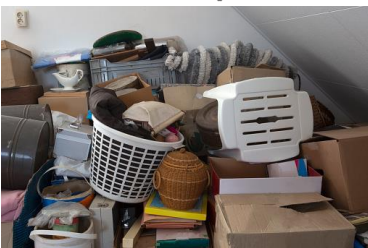
This is when someone tries to control, scare someone or keep another person from their friends or family.

They can do this by making decisions that benefit themselves instead of the person, criticising and frightening people to make them act in a certain way.



Self-Neglect

This is when a person is not able to look after himself or herself properly.



This can mean not eating properly, not keeping clean, not cleaning clothes and their home, or not looking after medical conditions they have.



Domestic Abuse

This is abuse that happens in a person's home. It can be physical abuse, mental abuse, sexual abuse or financial abuse.



Modern Slavery

This is when people are forced into work, doing things they do not want to do, or are forced into marriage and cannot leave.



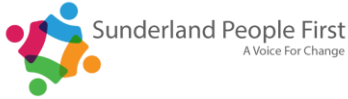
Radicalisation

This is where an extreme religious or political organisation persuades a person into supporting their beliefs and ideas. Radicalisation can result in people becoming involved in terrorism.



Terrorism

Terrorism is an unlawful use of violence and fear against innocent people because of religious or political beliefs.



Sunderland People First made our Annual Report for 2019 – 2020 into easy read.

We shared this on our website.



National Vulnerability Plan

We are part of national work to look at areas where most people needed support.



A Good Service

Giving a good service is very important to us.



Safeguarding make sure that the victim of abuse is the most important part of safeguarding at every stage of the process.



We keep up to date with new laws which affect our work.



The Care Act is an important part of keeping people safe



We make sure that all our work is to a high standard.



We train staff to a high level.



Police attend all learning and training meetings so that people can receive a better service.



The police get involved at an early stage to stop incidents getting more serious.



We stop vulnerable people becoming involved in terrorist activities.



There is a process for people to raise things they are worried about.



Organisations who form the Safeguarding Adults Board have their own teams to investigate abuse.



We are looking at how we can improve how all services can work together on difficult cases.



The Safeguarding Team at the Council deal with complicated cases that need more investigation.



The Safeguarding Board are working to help prevent crime, especially violent crime



What happened in 2020 - 2021



We had to work even harder to keep people safe during 2020-21 due to the COVID Pandemic.



We very quickly changed the way we worked to keep people safe and protect our communities.



We took on more staff to deal with the higher workload.



There were more reports of abuse during the pandemic.

Safeguarding dealt with over 3000 reports of abuse.



During lockdown different types of safeguarding issues were being reported.



Most abuse took place in people's homes or residential and nursing homes.



There were only a few cases where people were abused in health services or hospitals.



Most of the reported abuse was physical abuse or neglect.

Other abuse reported was emotional abuse and financial abuse.



In most cases of abuse the victims were older women.



We kept people safe due to the hard work and dedication of our staff team.



We needed to help people who were shielding and did not have families to support them.



The organisations that are members of the Safeguarding Board set up a network of volunteers.



Volunteers delivered groceries, medicines and other things to vulnerable people.



Safeguarding meetings were held online.



Staff kept in touch with people by video calls and text messages.



We helped people by using technology in a better way and changing the way we worked.



We gave advice about how to get funding to buy iPads and computer equipment to help people keep in touch.



Staff delivered iPads to people who were isolated so that they could keep in contact.



We shared messages on Twitter and social media on how to keep safe.



There were a lot of cases of abuse reported to the safeguarding team.



The computer system allows reports of abuse to be responded to quicker.

There were more referrals than before the pandemic.



About half of these cases were passed onto the safeguarding process.



In some cases of abuse the victim did not have mental capacity.



The Safeguarding Team delivered self-neglect training at a national conference.

We promoted self-neglect awareness during Safeguarding week, and how people could help.



We supported Safer Internet Day to show people how to keep safe online.



We held a lot of events giving information, and what people should do if they think that someone needs help.



We were part of setting up a Missing Person's protocol.

A protocol is a set of rules. We looked at what should happen when people go missing.



There is a domestic abuse programme to deal with people being abused in their homes.



We developed a new service for women who have experienced abuse.



We delivered a lot of safeguarding adults training online, including training to GP surgeries.



People who received our training said that they found it very useful.



We worked with a lot of different partners on campaigns to keep people safe.



Next year we are expecting that things will continue to be difficult as we recover from the pandemic.



We will look at the way we do things to make sure we are supporting people in the best way.



We will look at the type of abuse in the local area, and how we can work to stop abuse.



We will deliver mental capacity training to other services in the next year.

Mental capacity means the ability to make decisions.



We will work with adults who do not have mental capacity and are at risk of harm.



We will do all that we can to keep Sunderland a safe place to be.

Produced by

